

This Quick Start Guide applies to the following Brooks product:  
 • Model 0254 Four Channel Secondary Electronics  
 In an effort to be more eco-friendly, Brooks is no longer supplying printed instruction manuals with product shipments to reduce our paper consumption.  
 For this product's complete instruction manual, please download it at [www.BrooksInstrument.com/Manuals](http://www.BrooksInstrument.com/Manuals) and click on "Secondary Electronics" 0254.

Dear Customer, We appreciate this opportunity to service your flow measurement and control needs with a Brooks Instrument device. Brooks' award-winning meters and controllers consistently rank at the top of their category for accuracy, reliability and user preference, as judged by the audience that matters - real users of flow instrumentation, like you.  
 But Brooks' products are only half of the story. You are backed by Brooks' unsurpassed local technical expertise in virtually every corner of the planet. Your local Brooks product and application specialists truly your "partner in flow". They have been extensively trained to help you select the optimal solutions for your flow measurement or control needs and offer years of experience solving application problems just like yours.  
 Should you require any additional information concerning Brooks' products and services, please contact your local Brooks Sales and Service office listed on the back cover of this guide.  
 Sincerely,  
 Brooks Instrument

Visit us online at [www.BrooksInstrument.com](http://www.BrooksInstrument.com)

**Brooks Instrument**  
 407 West Vine Street  
 P.O. Box 903  
 Hatfield, PA 19440-0903 USA  
 Tel (215) 362 3700  
 Fax (215) 362 3745  
 E-mail [BrooksAm@BrooksInstrument.com](mailto:BrooksAm@BrooksInstrument.com)

**Brooks Instrument**  
 Neonstraat 3  
 6718 WX Ede, Netherlands  
 P.O. Box 428  
 6710 BK Ede, Netherlands  
 Tel +31 (0) 318 549 300  
 Fax +31 (0) 318 549 309  
 E-mail [BrooksEu@BrooksInstrument.com](mailto:BrooksEu@BrooksInstrument.com)

**Brooks Instrument**  
 1-4-4 Kitasuna Koto Ku  
 Tokyo, 136-0073 Japan  
 Tel +81 (0) 3-5633 7100  
 Fax +81 (0) 3 5633 7101  
 E-mail [BrooksAs@BrooksInstrument.com](mailto:BrooksAs@BrooksInstrument.com)

Brooks is a trademark of Brooks Instrument, LLC.  
 X-SE-0254-QS-eng (0309)  
 PN: 541B130AAG/A



© Copyright 2009, Brooks Instrument, LLC.  
 All rights reserved. Printed in USA.

[www.BrooksInstrument.com](http://www.BrooksInstrument.com)



**WARNING**  
 Read all instructions prior to installing, operating and servicing this product.  
 Follow all warnings, cautions and instructions marked on and supplied with this product.  
 Install your equipment as specified in the installation instructions in the appropriate instruction manual and per local and national codes. Connect all products to the proper electrical and pressure sources.  
 Ensure that all equipment doors are closed and protective covers are in place, except when maintenance is being performed by qualified persons, to prevent electrical shock and personal injury.  
 Do not operate this instrument in excess of the specifications marked on and supplied with this product. Failure to heed this warning can result in serious personal injury and/or damage to the equipment.  
 Before operating the device, ensure all electrical connections have been properly terminated.  
 If it becomes necessary to remove the device from the system, power to the device must be disconnected.

**Quick Start Guide**  
**Model 0254 Four Channel Secondary Electronics**  
**Secondary Electronics**



[www.BrooksInstrument.com](http://www.BrooksInstrument.com)



**Assembly and Installation**

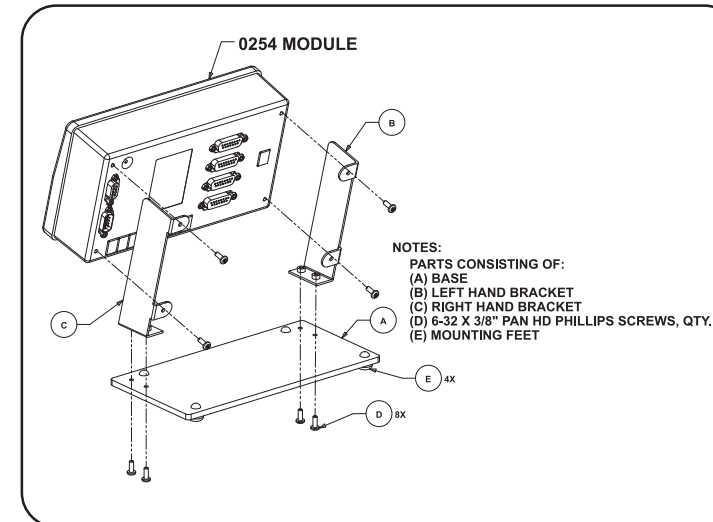
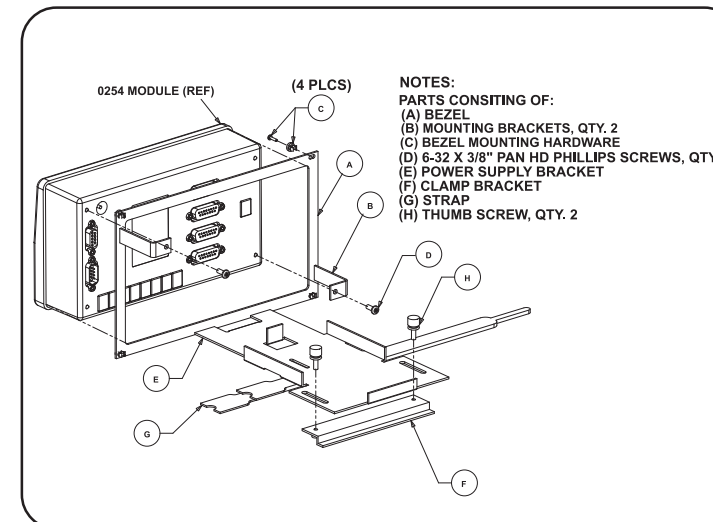
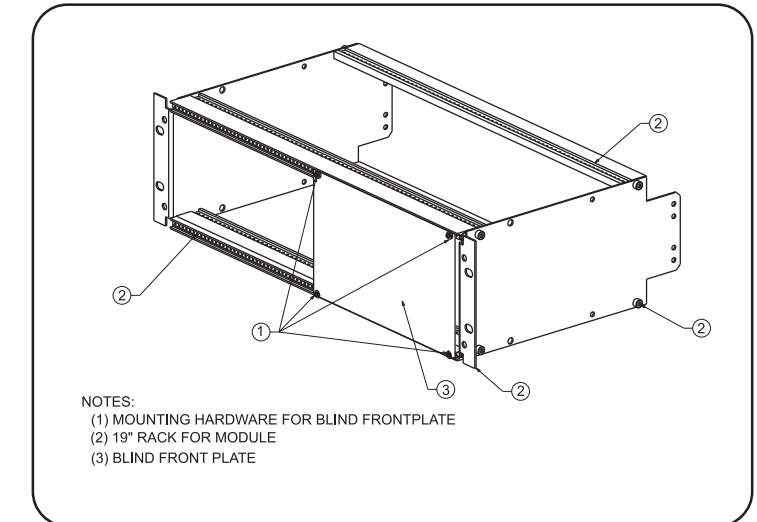


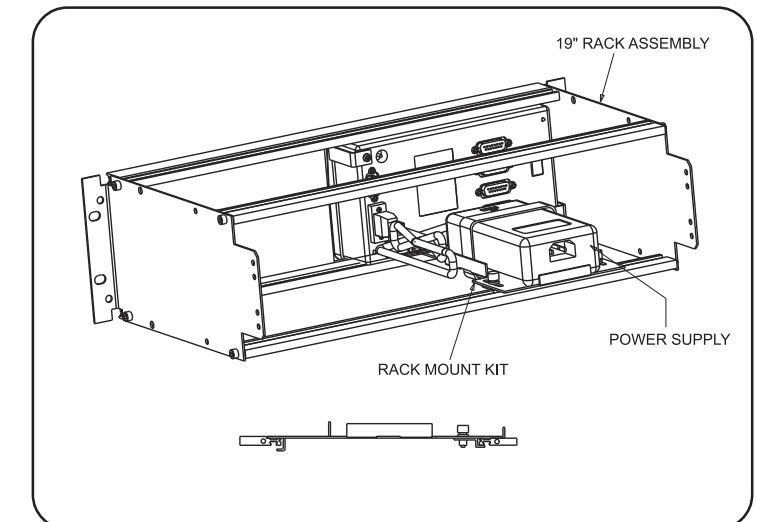
Table Top Mount Installation



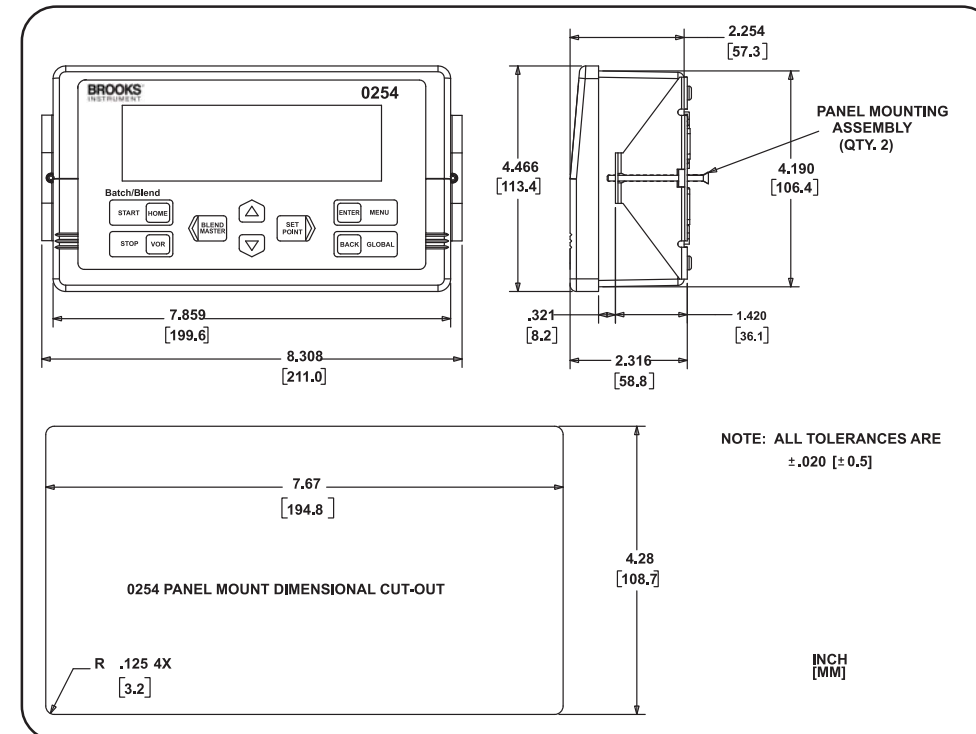
19" Rack Mount Kit Assembly



Blind Front Plate Assembly

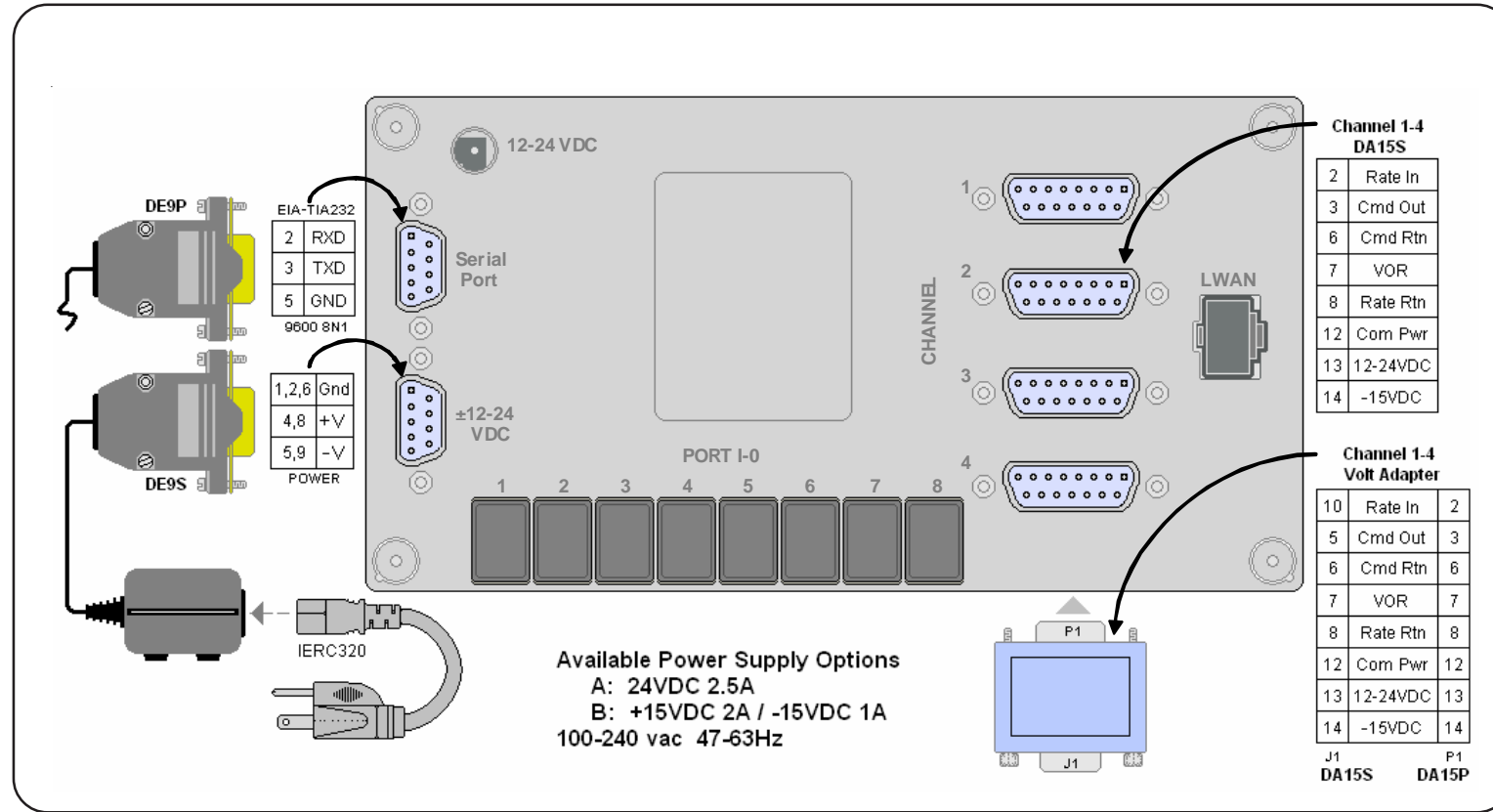


Power Supply Bracket and Bezel



Panel Mount Cut-Out Dimensions

## Assembly and Installation (Continued)



Signal Wiring

## Equipment Receipt and Return Procedures

### Receipt of Equipment

If the packing case is damaged, the local carrier should be notified at once regarding their liability. Carefully remove the equipment from the packing case and inspect for damage or missing parts. If damaged, please contact Brooks Instrument at one of the locations listed on the back of this Quick Start Guide.

### Return Shipment

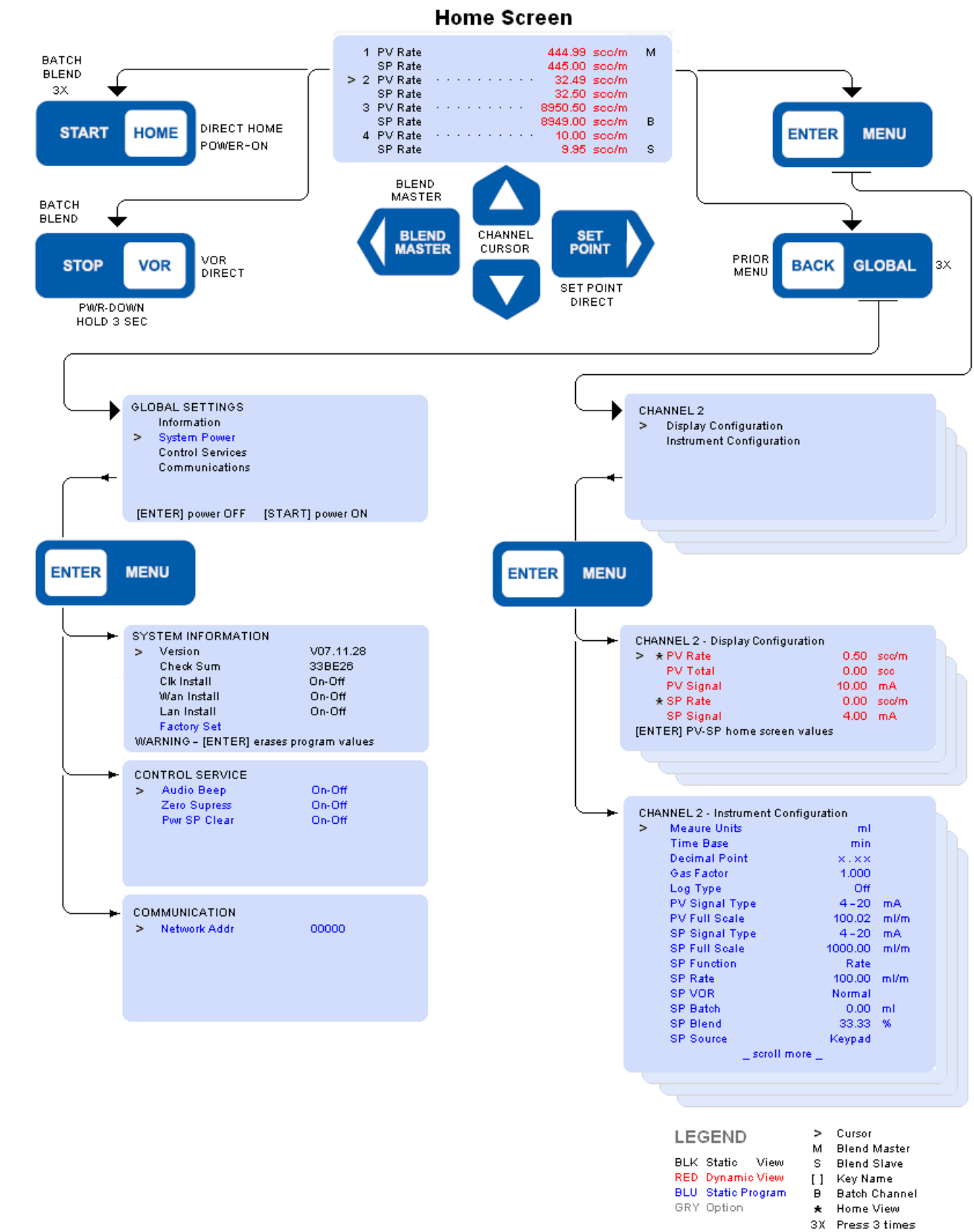
Prior to returning any instrument to the factory, contact your nearest Brooks location for a Return Materials Authorization Number (RMA#). This can be obtained from one of the Brooks Instrument locations listed on the back cover of this Quick Start Guide.

## Operation

After the 0254 has been assembled and installed in the system, it is ready for operation. Refer to System Navigation Map on page 6 for details regarding operation.

## Operation

### 5.2 0254 System Navigation Map



User Interface Screen Map